



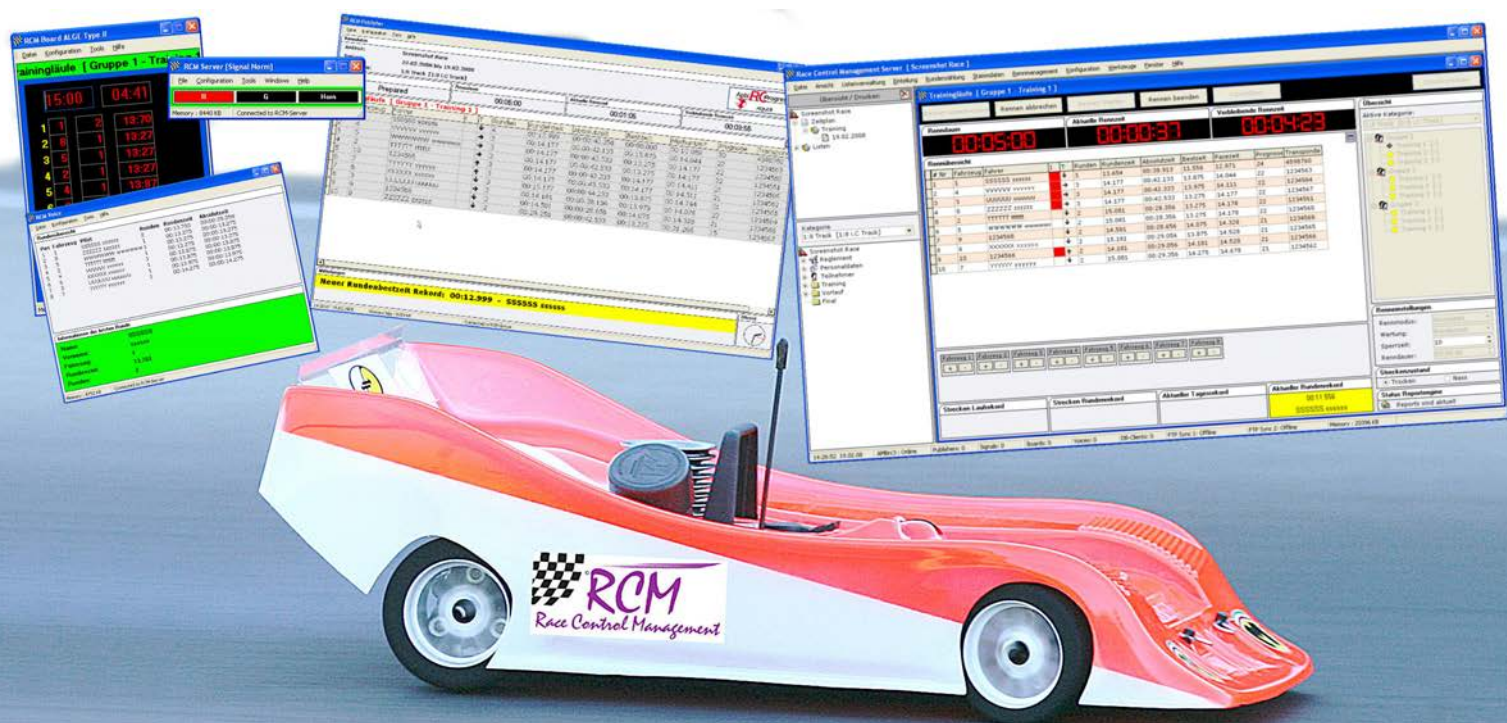
©

RCM

Race Control Management

User Manual

RCM Board



RC-Timing

User Manual

RCM Board Version 1.0.1.1

Content

1	Introduction.....	3
2	Installation of RCM Board	3
2.1	Registration/set language.....	6
3	First steps.....	6
3.1	Configuration of the network	6
3.2	Configuration of the port for the display	8
4	File	9
4.1	Close	9
5	Configuration.....	9
5.1	Language	9
5.2	Options	10
5.2.1	RCM/General.....	10
5.2.2	RCM/Race Grid	10
5.2.3	Interface/Network	11
5.2.4	RCM Board/Port.....	12
5.2.5	RCM Board/Preferences	12
6	Tools	13
6.1	Language Editor	13
6.1.1	Create a new language	13
6.1.2	Delete a Language	14
6.1.3	Language editor	14
6.2	Standby/Light On	16
7	Help.....	16
7.1	Release history.....	16
7.2	Info.....	17
8	Concluding remarks.....	18

The software and the manual are protected by the copyright law. The use is limited to the licence contract and it's determination. It is not allowed to copy or use the software without permission of RC-Timing, Switzerland. All rights reserved. It is not allowed to reproduce or to use the software, this document or parts of it for other purposes without a written permission of RC-Timing.

Copyright 2005 - 2008

RC-Timing

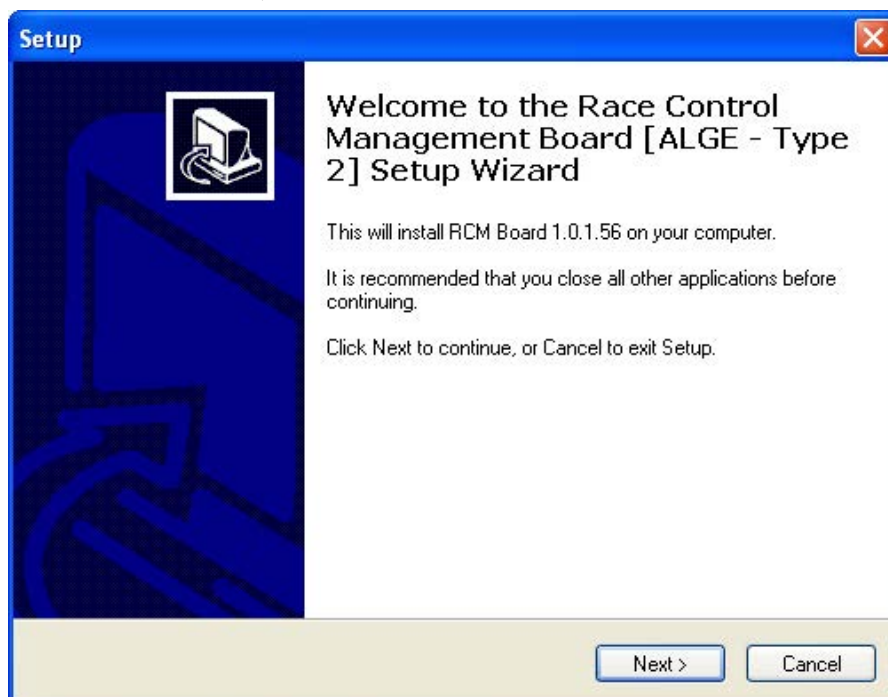
Oberhasli, Switzerland

1 Introduction

With a large size display you improve your championship races. You keep the excitement for the spectators and you give the mechanic a quick overview on the race situation. RCM Board controls large size displays. It needs RCM Server. RCM Board is programmed according to the specification of a large size display and is available for six large size displays up to now. Large size display needs quite different settings depending on the type and the manufacturer. Therefore this user manual can only give a basic overview on the functions of RCM Board. According to your large size display the functions can vary. Maybe there are additional settings or some settings are missing. If you already have a large size display we likely adopt RCM Board to the specifications of your display.

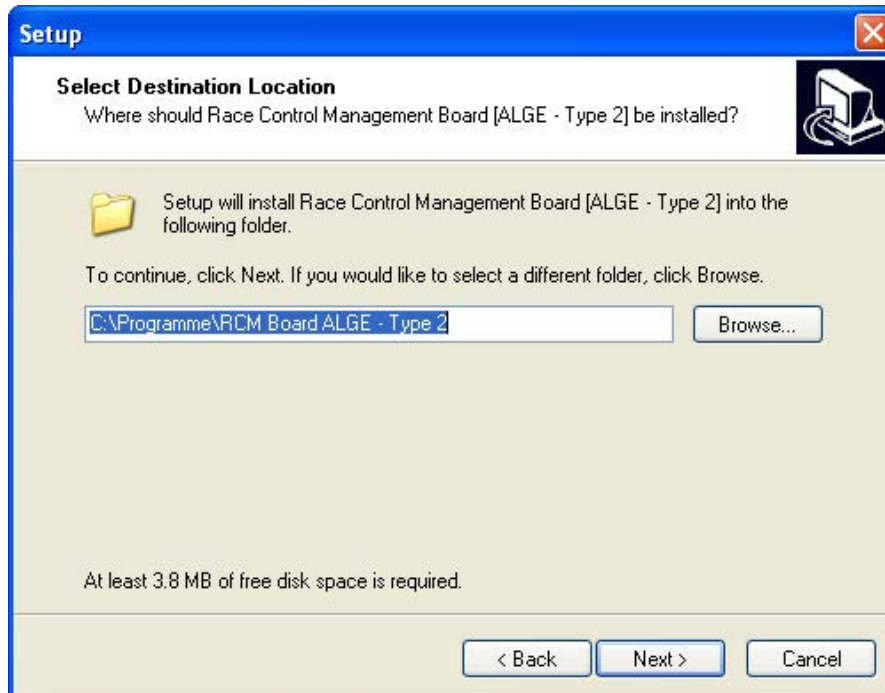
2 Installation of RCM Board

RCM Board is delivered as executable setup-file. Installing RCM Board the first time you have to use the full version. Otherwise you can use the update-version. To start the installation you have to run the setup file (double click in the Windows Explorer on the filename like "RCM.Board(v1.0.2.3-F-AÖGE-T1)" or use start/run of the main menu of Windows).

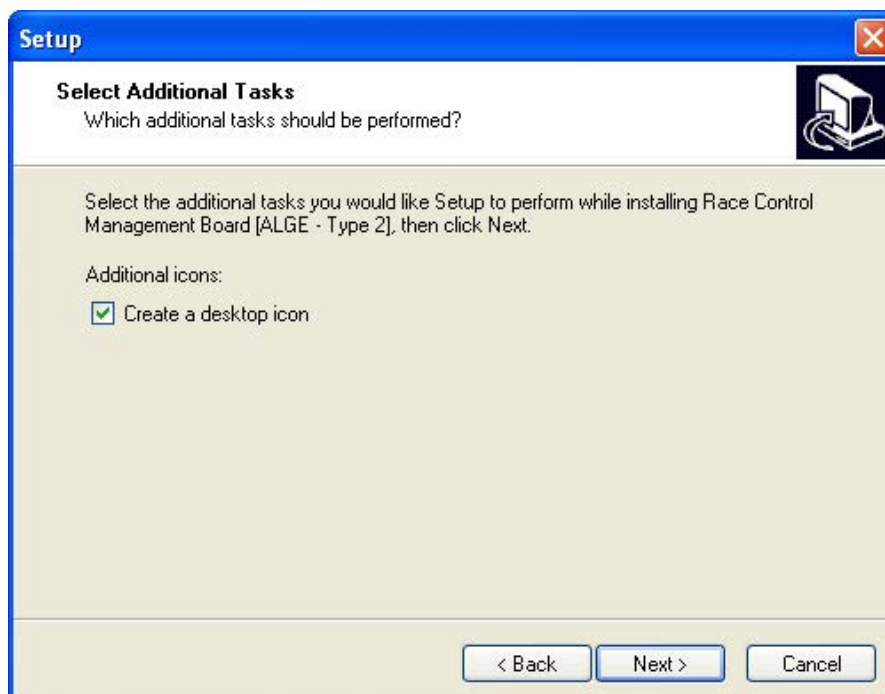


Before you run an update we recommend to you to make a complete backup of the RCM Board folders. Please do not delete these folders or delete files in it.

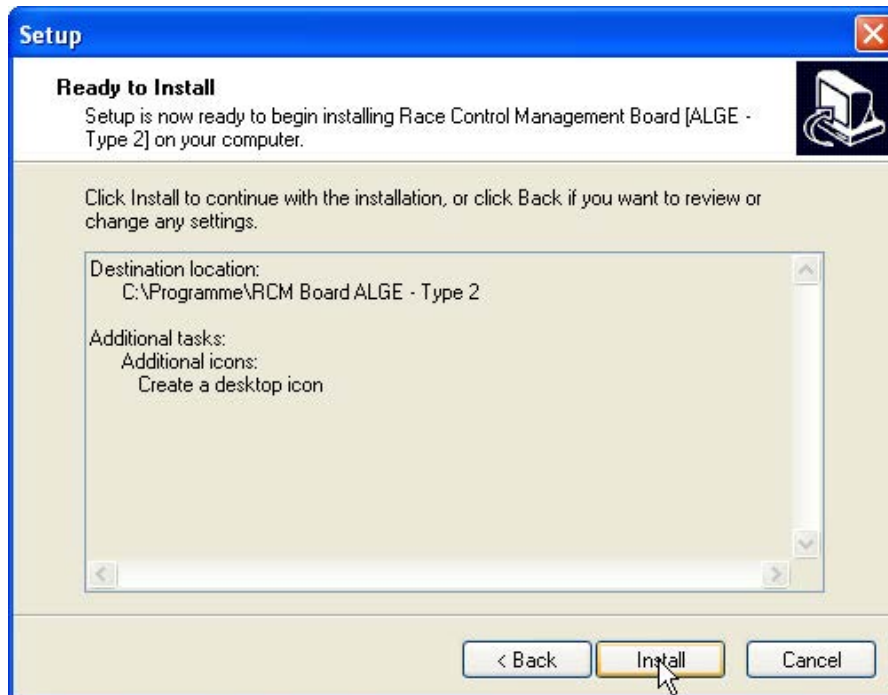
Please note, that the update version is mostly newer than the full version. If you install RCM Board the first time you should run an update directly after the installation.



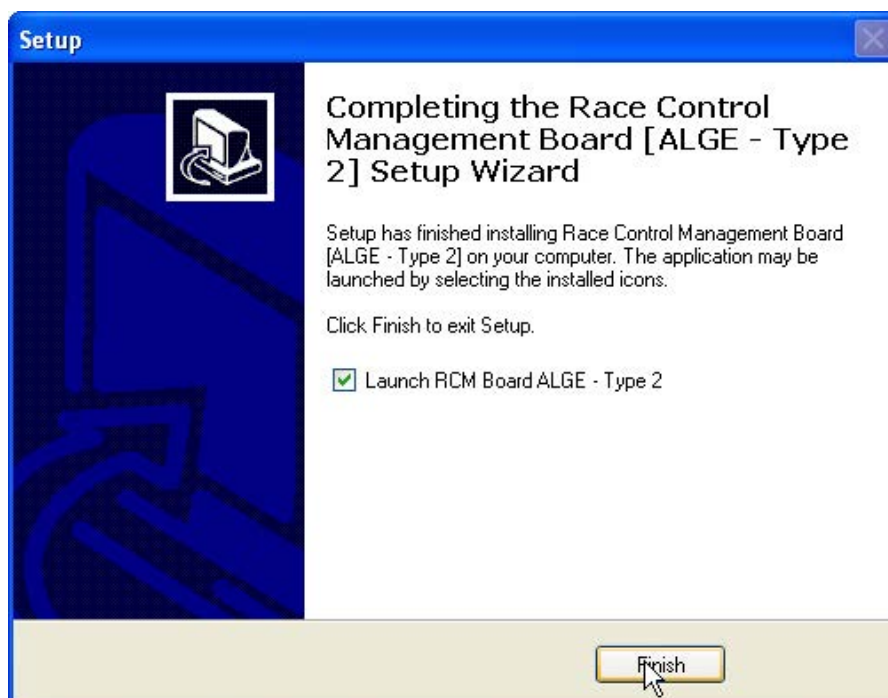
After the welcome screen (please click here on Next), the next windows shows you the destination folder. Preferable this is C:\program files\RCM Board. You should not change this except for special reasons.



Again you click on next and in the following window you can determine whether setup creates an icon on the desktop for starting RCM Board.

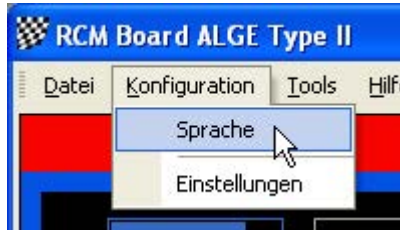


The next window shows you a summary of the actions setup will execute. With clicking on Install you will start the setup process.



2.1 Registration/set language

RCM Board is distributed as freeware and you can use the program directly after installing. The application language is maybe set to German by default. For changing this language please go to Konfiguration/Sprache.)of Configuration/ language, depending if the default language).



The application language is maybe set to German by default. For changing this language please go to Konfiguration/Sprache. A window will open with a list of all available languages. Activate the language you want and click on Ok.

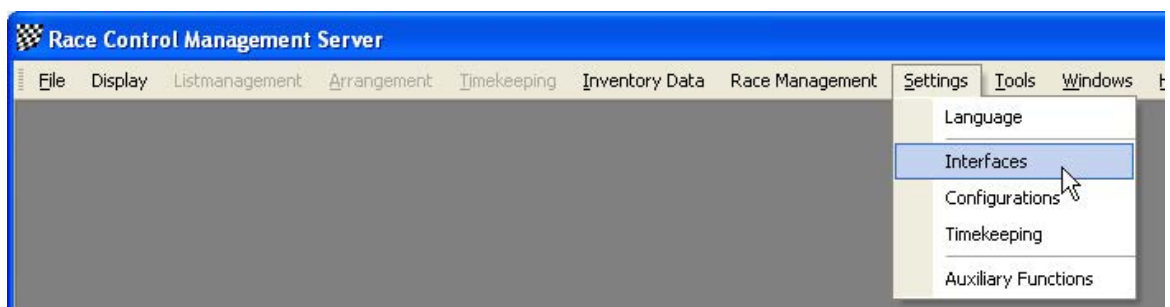


3 First steps

3.1 Configuration of the network

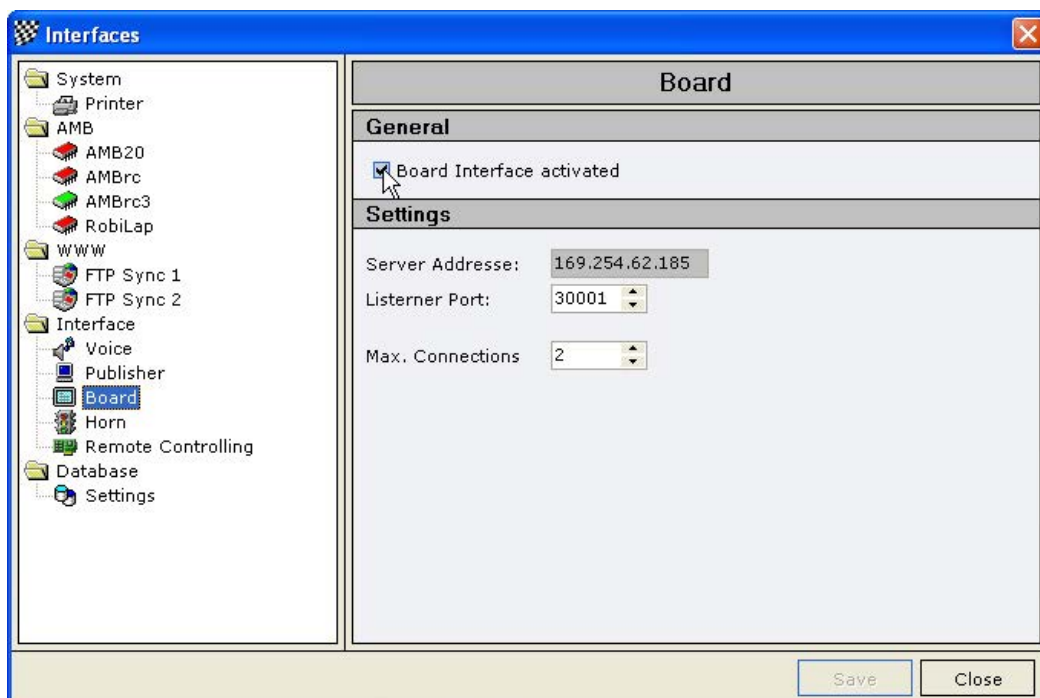
Launching RCM Board the first time the footer line "Connection Timeout" shows that RCM Board was not been able to connect to RCM Server. In addition the frame in the middle of RCM Board is coloured red.

First of all you have to set the IP-address of the server. For checking these, please run RCM Server and go to Settings/Interfaces.

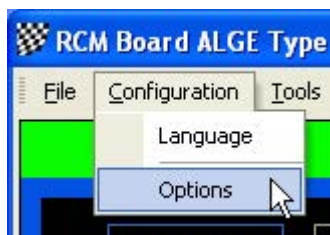


In the left column of the window you mark Interface/Board. In the right column you now see the Server-IP-Address which must be set in RCM Board. Please note,

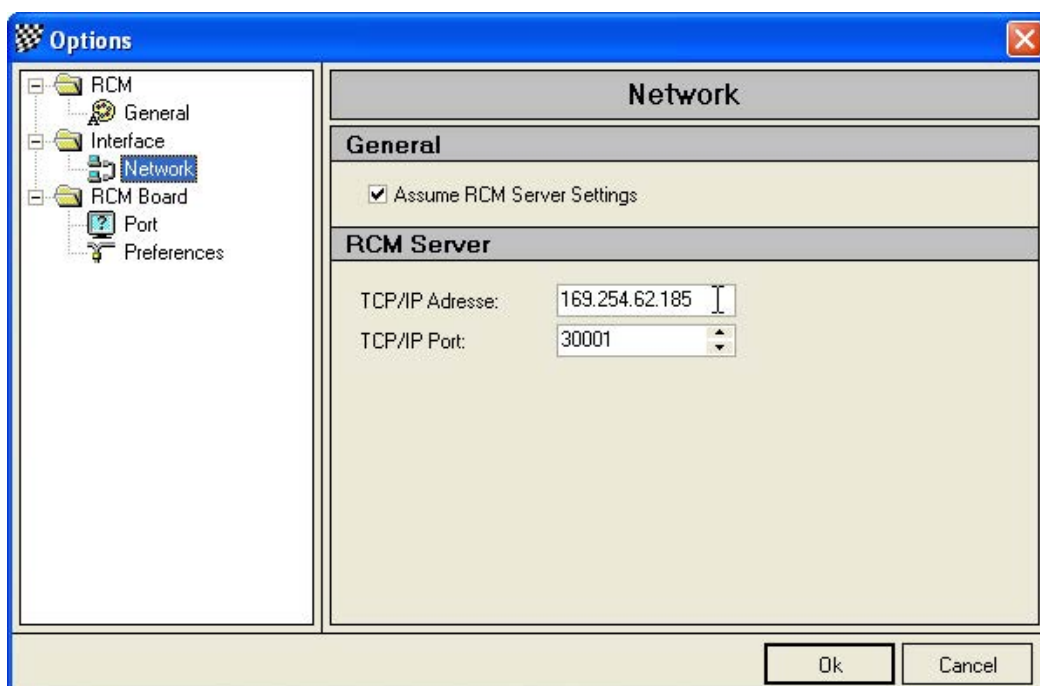
that the checkbox “Board Interface activated” is activated. If not, please do it and confirm this change with Save.



Now the IP-Address must be entered in RCM Board. You choose Configuration/Options.



In this windows you mark on the left column Network and type the IP-Address you have found in RCM Server into the field TCP/IP-Adresse.

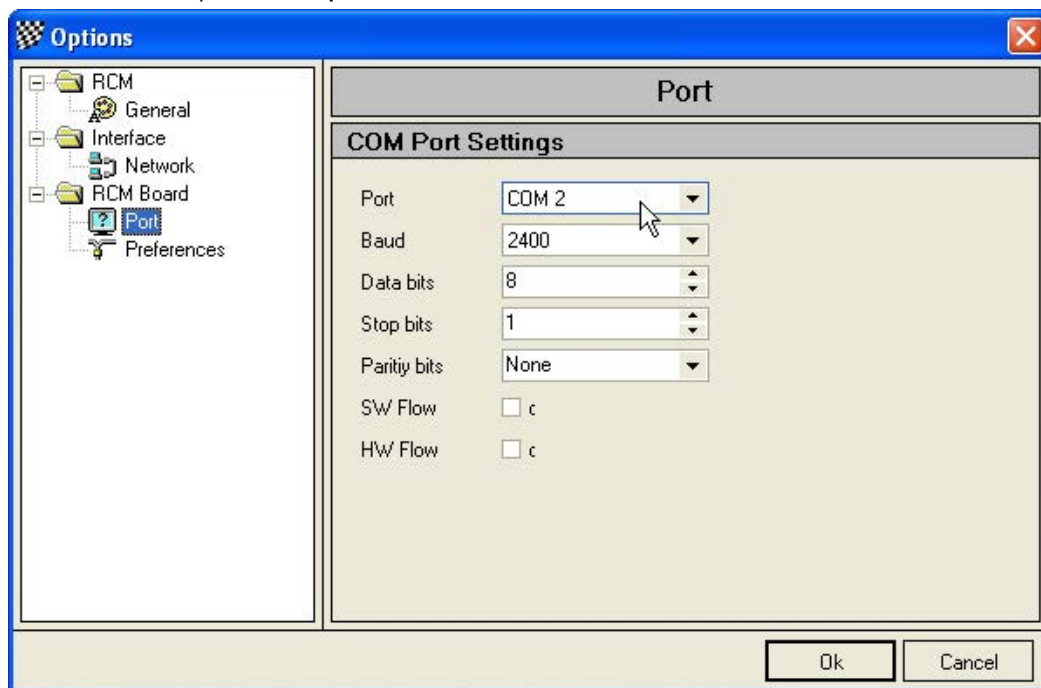


Please leave the number of the TCP/IP Port at 30001. Only with this port RCM Board is able to receive the necessary information from RCM Server. Confirm your settings by clicking Ok. Now the footer line changes to “Connected to RCM-Server” and the colour of the frame in RCM Board will change to green. Please consider, that it can take several seconds until RCM Board has found the connection to RCM Server.

If RCM Board can not establish a connection your network may be does not work properly. To check this, please open a Command Shell and type in PING <ip-adresse> (for example PING 255.255.255.158). If you got an error message (time limit exceeded), your network is not working properly and you have first to check the connections.

3.2 Configuration of the port for the display

Depending on your large size display and besides of the network connection RCM Boards need a a port to communicate with your display. In this case you will find a selection in Configuration/Options. Here you select the port the large size display is connected to your computer.



4 File

4.1 Close

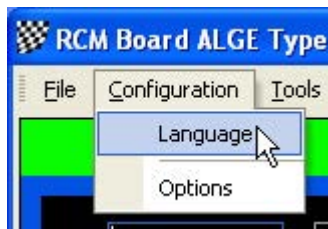
RCM Board will be closed.



5 Configuration

5.1 Language

With Configuration/Language you can set the languages used by RCM Board.



Marking RCM Language in the left column of the window you can set the language used for the application. This means the language for all the text in the menus and windows of RCM Board.

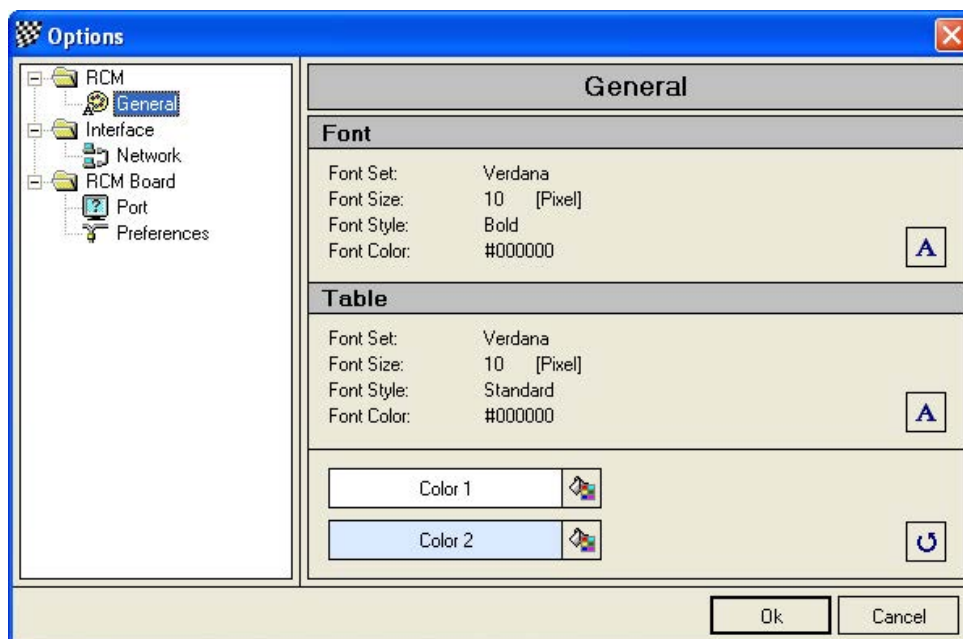


5.2 Options

Depending on the large size display you are using the functions described here can vary. Some displays maybe need different settings or can handle additional features.

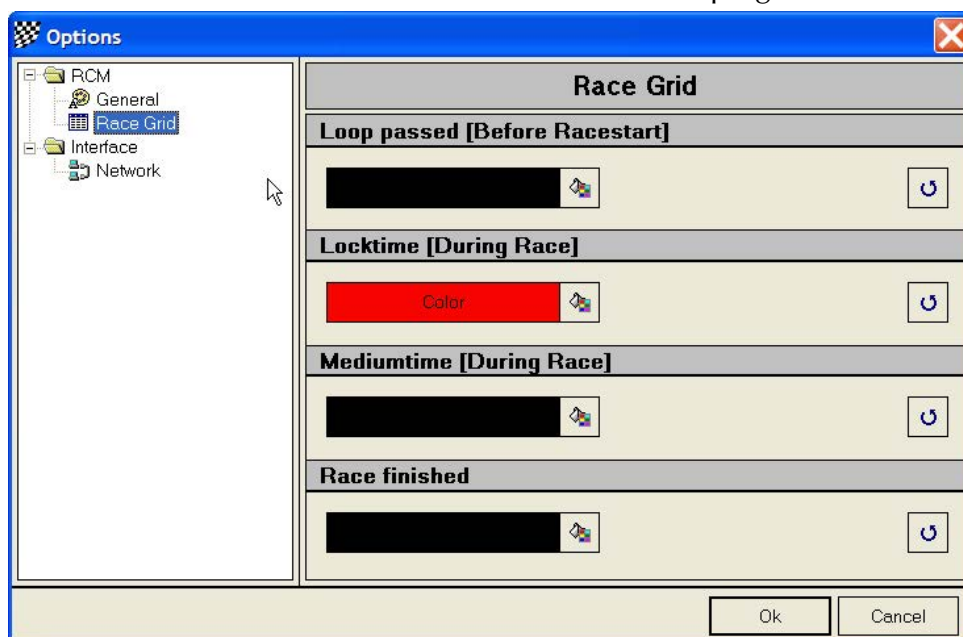
5.2.1 RCM/General

Marking in the left column General, you can set up the fonts, the fonts size and some colours used by RCM Board. The settings for tables are not used by RCM Board.



5.2.2 RCM/Race Grid

The colours a driver will be marked in the time keeping can be set here.



Loop passed: When a driver passes the loop and the transponder number is registered to a driver, it will be marked in that colour. This makes it easy to check whether all drivers are on the track or not.

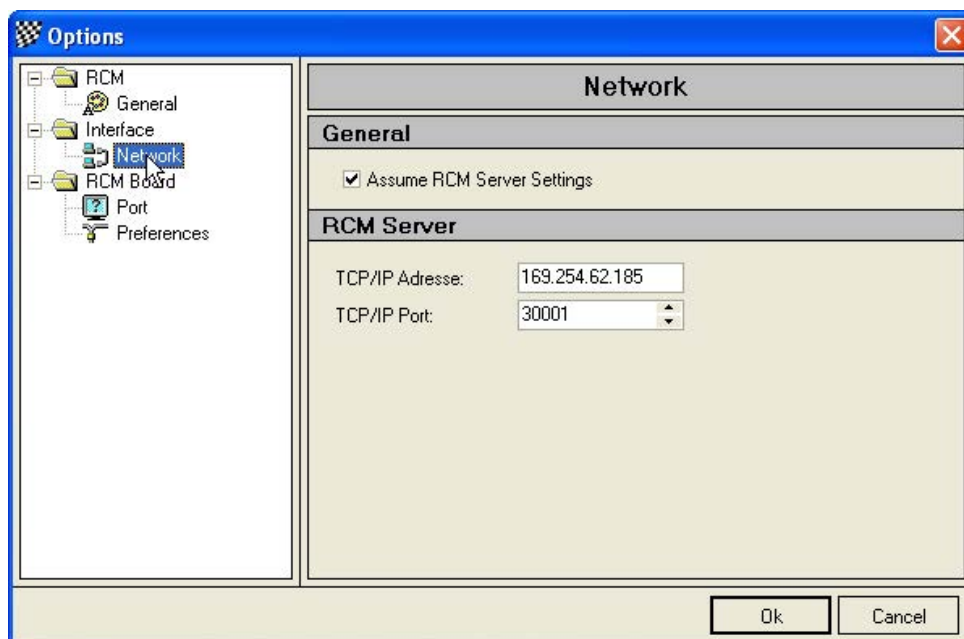
Locktime: This marking is visible for the locktime. In between this time no additional laps are counted but in the lap time logfile these laps are visible and marked with "NOK". This means,, that these laps will not be counted for the result.

Mediumtime: Drivers usually drive their laps continuously in the time frame. This time frame is the medium time plus or mines a certain time ratio. If this medium time plus the ration time is expired the driver line will be marked in light grey and means the driver was slower. This can be an accident, a pit stop or a roll over situation.

Race finished: When the race time is over and the driver passes the last time the loop then the driver is marked light blue and has completed the race. Additional laps will not be counted anymore, even if the driver continues racing.

5.2.3 Interface/Network

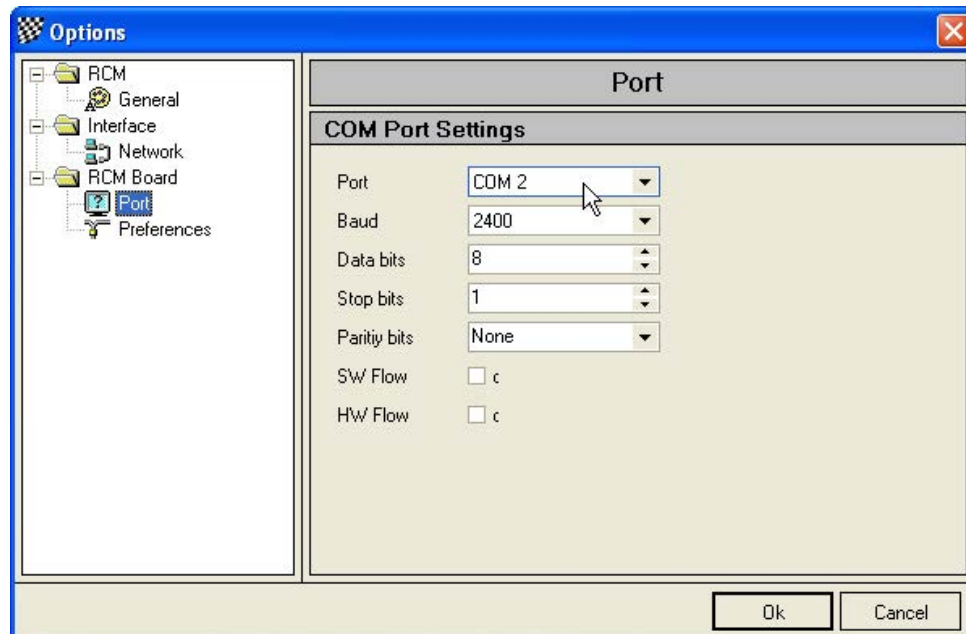
In Network you have to configure the IP-Address of the computer where the timekeeping-software is running. RCM Board needs a network connection to this computer, as described in first steps. We recommend to you to activate "Assume RCM Server Settings".



The TCP/IP Post is set to the correct number by default. You should not change this number.

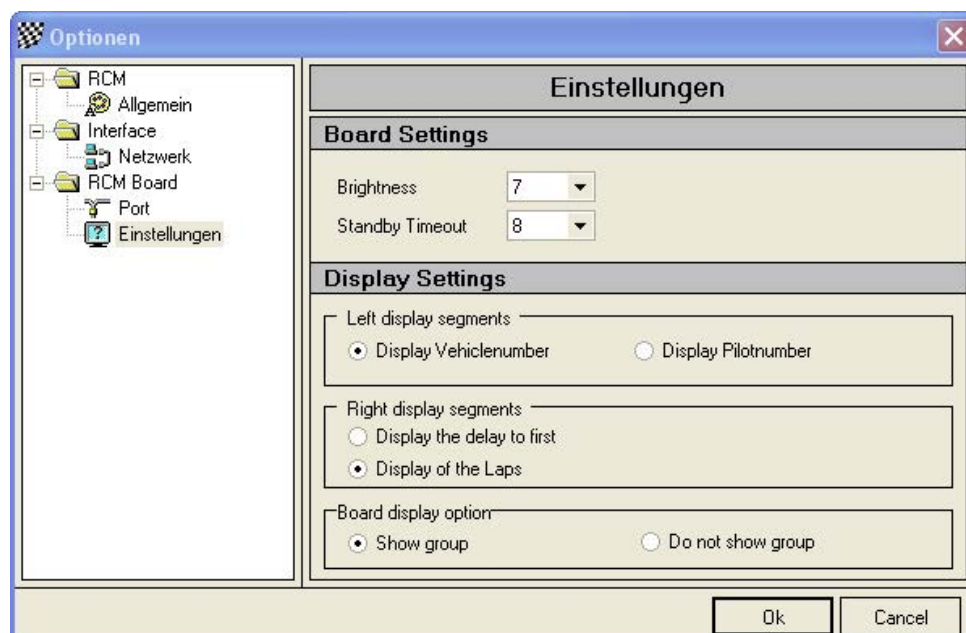
5.2.4 RCM Board/Port

If your display is connected to your computer using a parallel or serial port you select here the port. Please refer to the manual of your large size display too.



5.2.5 RCM Board/Preferences

If your large size display has the possibility for special settings, you can set the preferred values here.



Using the large size display ALGE Typ I you can select for example, if the car numbers or the driver numbers are displayed. Further on you can select whether the number of driven laps or the number of laps a driver is behind the first and whether the information on the group just driving is displayed for 2 seconds every 10 seconds. As said, the settings depend on the type of large size display you use.

6 Tools

6.1 Language Editor

6.1.1 Create a new language

The language editor can be used to create a new language set. The name of the new language must be created in the menu Configuration/Language.



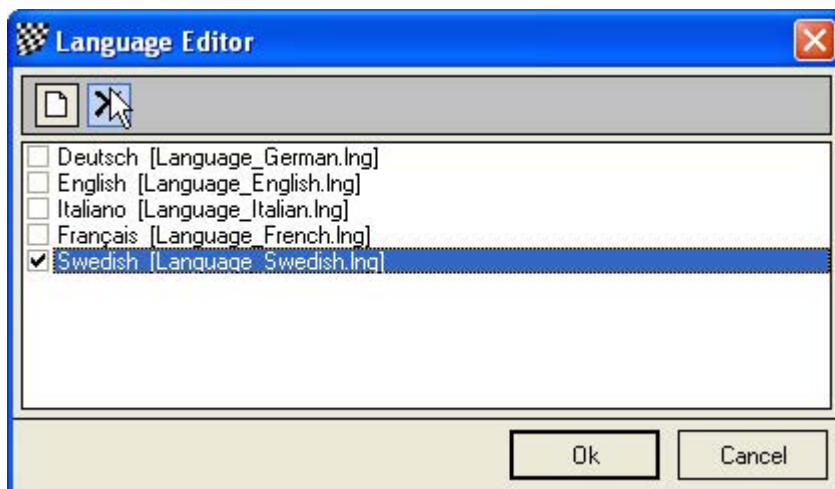
Left click on English and click on the notepad-field in the upper left corner. This opens a window in which you have to type in the new name of the Language you want to create.



You have only to type in the name in the Language field. The filename will be automatically created and should not be changed. For the name of the language please use the English description. When you confirm your input with Ok, a new set based on the English set will be created. Now you can translate all text with the language editor.

6.1.2 Delete a Language

With Configuration/Language you can also delete a language, except German, English, Italian and French. Left click on the language and click on the square with the cross in the upper left corner.



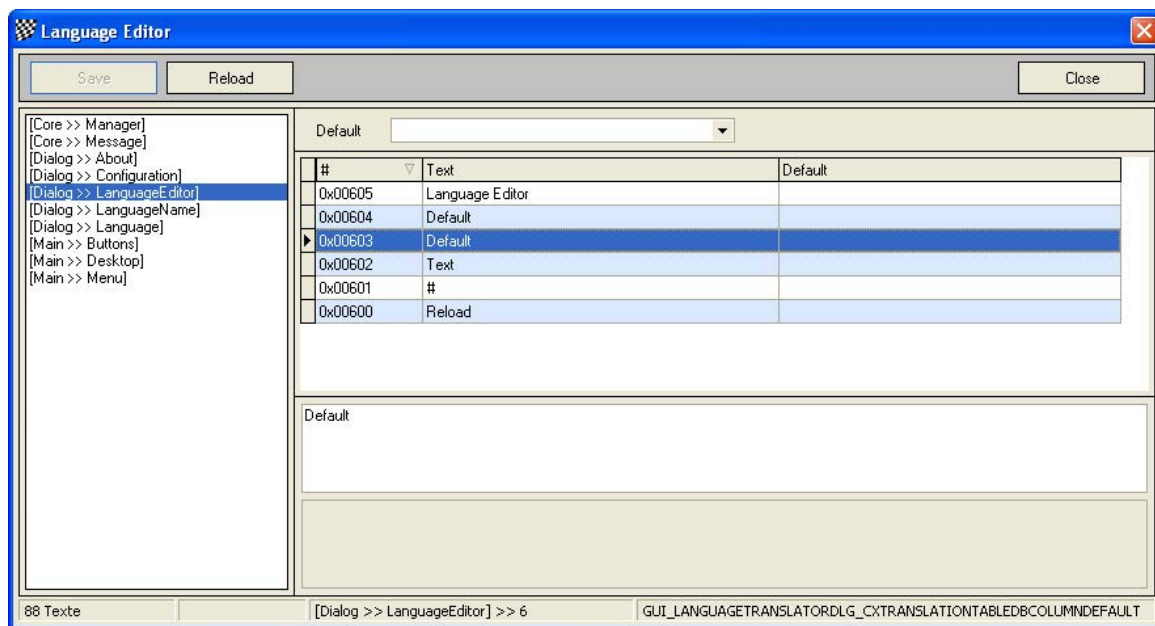
You will be asked if you really want to delete the language. Confirming this with Ok, the language will be deleted. Please be careful using this function cause it takes a lot of time to make a translation.

6.1.3 Language editor

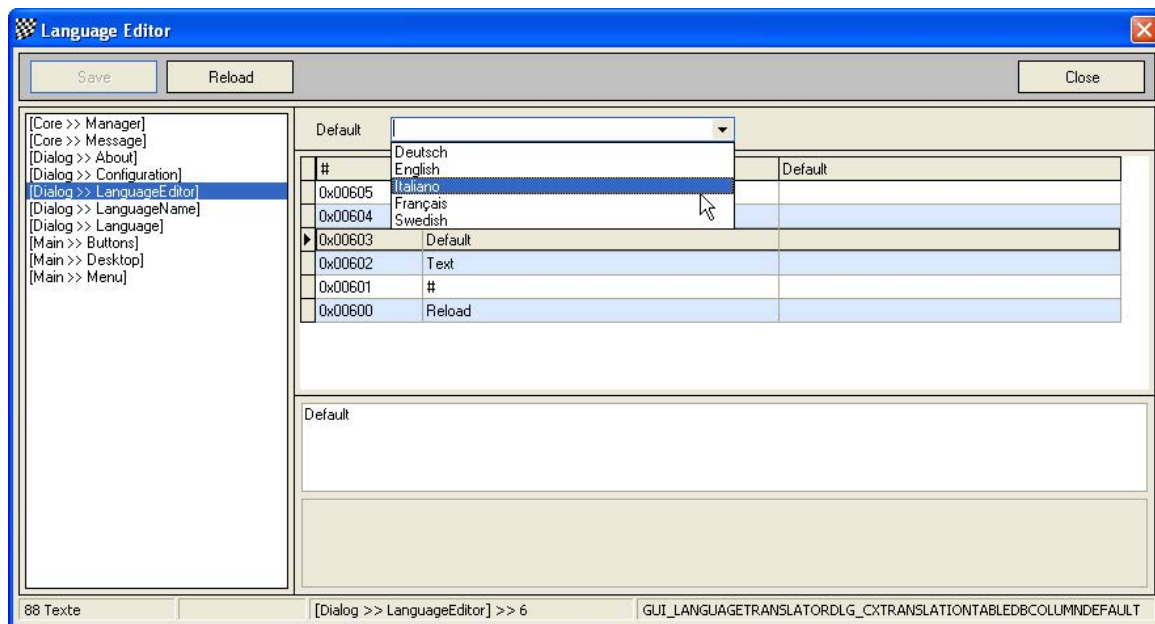
The Language editor allows to you to change all the text used by RCM Board. Furthermore it is possible to generate new language sets and to translate all the text into a desired language.



The windows of the language editor shows you in the left column a menu ordered to topics which are based on the use of windows and/or functions.

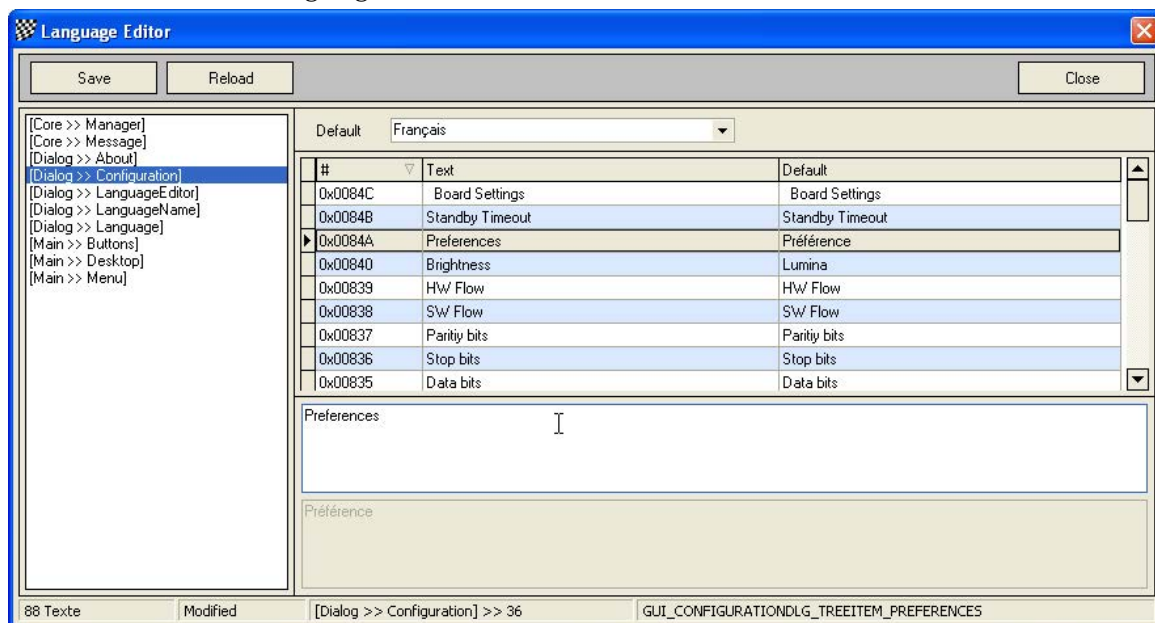


If one of these topics are marked, you see in the right column a table of all the text definitions related to this topic. On top of the right column you can define a default language. This will be active, when you mark another topic on the left side. After having selected a topic in the left column you have to mark the text in the right column. You can change the text below in the field Texttranslation. Please note, that the changes will only be effective, when you finish by clicking the Save-button.



If you have created a new language file and want to translate it, make sure that RCM Board uses this language (Configuration/Language/RCM Language). Cause the new set is based on the English Set, all text is now in English. The next step is to translate all text with the language editor. For a better understanding of all text we recommend, that you use the default-setting of the language editor to have the text

also displayed in that language you are familiar. Please note again, that you have to save (with the Save button) all your changes before you select another topic in the left column of the language editor.



6.2 Standby/Light On

This is a change-over switch. You can switch the large size display on and off without closing RCM Board.



7 Help

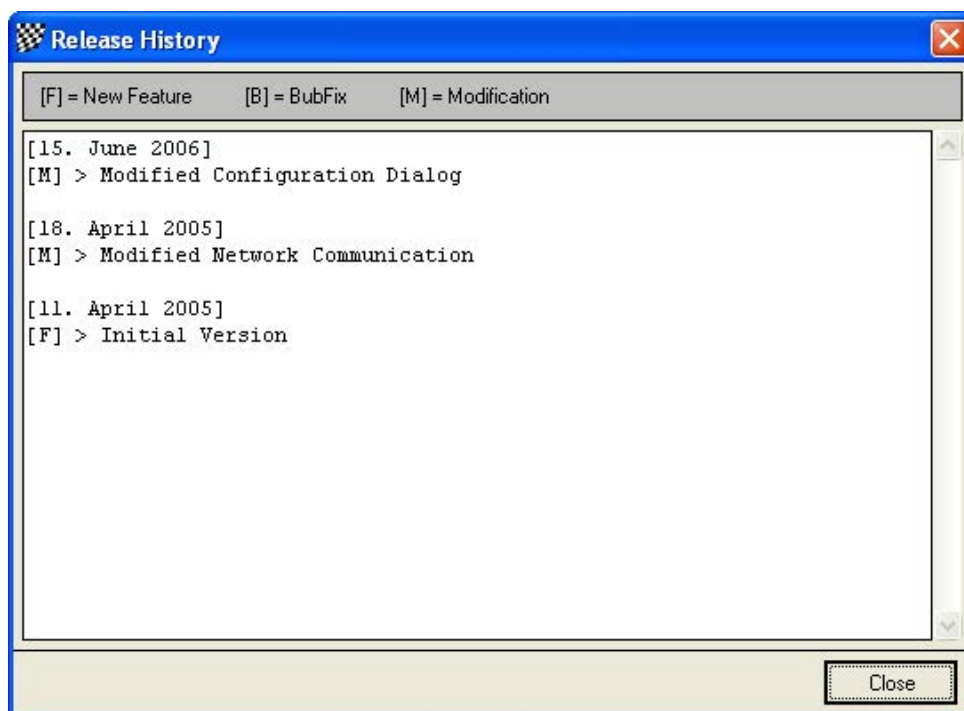
7.1 Release history

The release history is a text file with comments to all changes/developments have been made for this application.



The single entries are marked with letters: [M] = modification, [B] = bug fixing and [F]= new function.

When you get a new version we recommend that you read the release history to be informed on the news of RCM Board.



7.2 Info

Here you find the release version of RCM Board.



8 Concluding remarks

We hope you enjoy RCM Board. If you have any questions or any problems please contact us. Simply write an email to support@rc-timing.ch. Please do not forget to include the program name and the version number you are using. This will help us to answer your questions without any delay. If you are not known to us as a contact person of one of our customers, we should also know the contract number.

RC-Timing
Felix Romer
Talackerstrasse 45
CH-8156 Oberhasli