

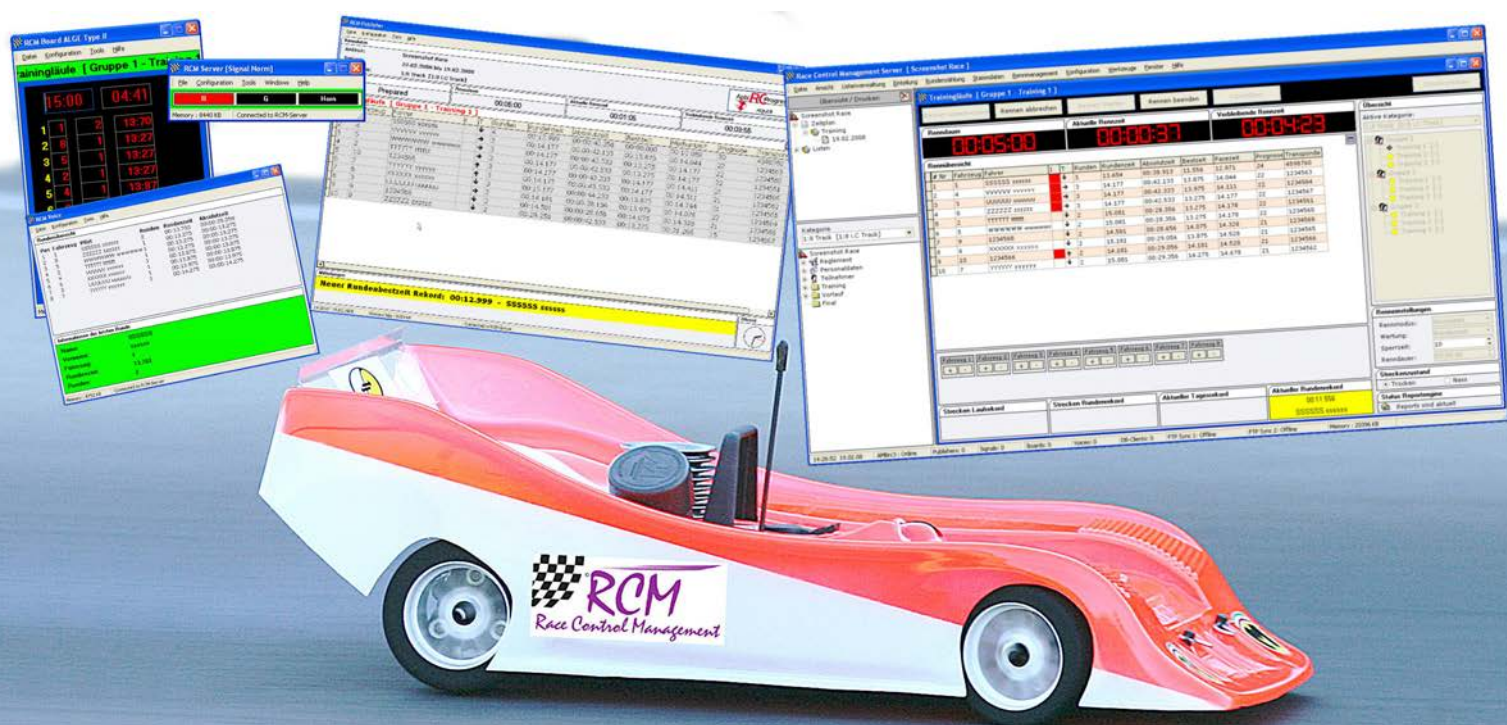


RCM

Race Control Management

User Manual

RCM Voice



RC-Timing

User Manual

RCM Voice Version 2.0.1.1

Content

1	Introduction.....	3
2	Installation of RCM Voice	3
2.1	Registration.....	4
3	First steps.	4
3.1	Configuration of the network	4
4	The Window of RCM Voice	7
5	Configuration of RCM Voice	8
5.1	Languages.....	8
5.2	Options	8
5.2.1	General.....	9
5.2.2	Settings	10
5.2.3	Anouncementformat	11
5.2.4	Network.....	12
6	Tools	12
6.1	Language editor	12
6.1.1	Change a text.....	13
6.1.2	Create a new language set	13
6.2	Voice editor	15
6.3	Soundtest.....	15
7	Help.....	16
7.1	Release history.....	16
7.2	Software Update	17
7.3	Info.....	18
8	Concluding remarks.....	18

The software and the manual are protected by the copyright law. The use is limited to the licence contract and it's determination. It is not allowed to copy or use the software without permission of RC-Timing, Switzerland. All rights reserved. It is not allowed to reproduce or to use the software, this document or parts of it for other purposes without a written permission of RC-Timing.

Copyright 2005 - 2014
RC-Timing
Oberhasli, Switzerland

1 Introduction

Welcome to RCM Voice, the essential additional application for timekeeping. RCM Voice allows a voice response of important events during a race. For example it announce automatically the countdown to the start, the remaining runtime, lap times and so on.

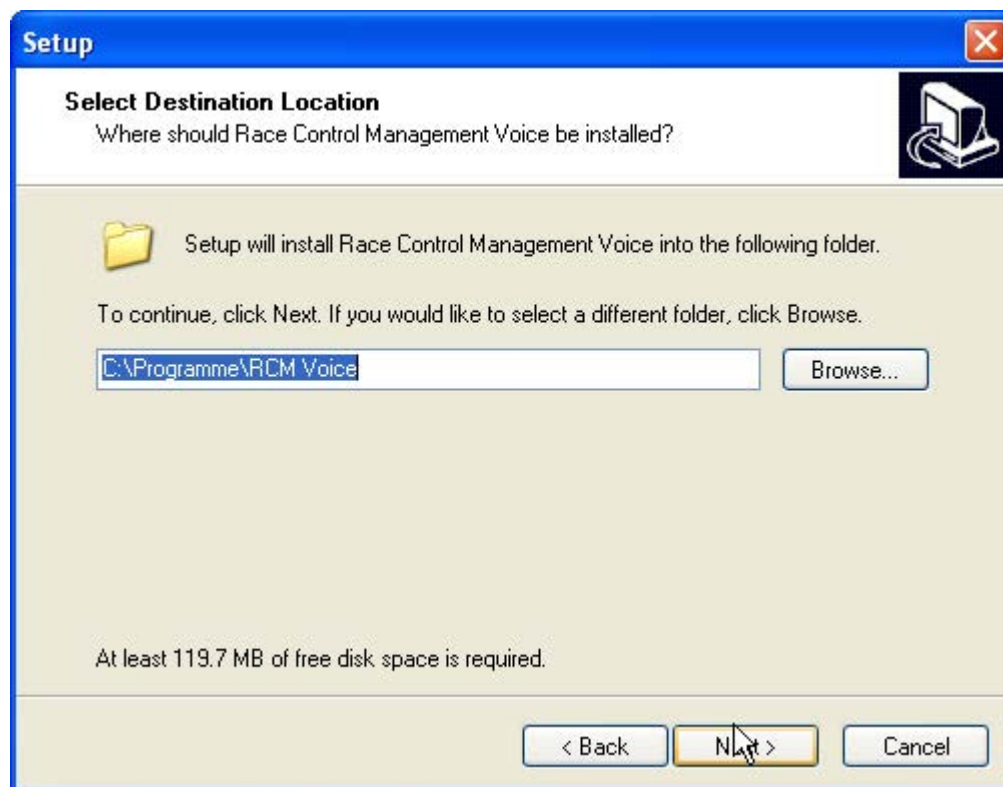
RCM Voice needs one of the following programs of the RCM product spectrum: Server, Kart, Advanced, Beginners, Online and Online Easy. You need a soundcard in your computer to get RCM Voice working.

2 Installation of RCM Voice

RCM Voice is delivered as executable setup-file. To start the installation you have to run this setup file (double click in the Windows Explorer on the filename like "RCM.Voice(v1.1.0.6-F)" or use start/run the main menu of Windows).

If a version of RCM Voice is already installed on your computer, the setup will perform an update. Otherwise setup does a full installation. Before you install an update we recommend to backup the complete RCM Voice folder. Please do not delete this folder or delete files in it.

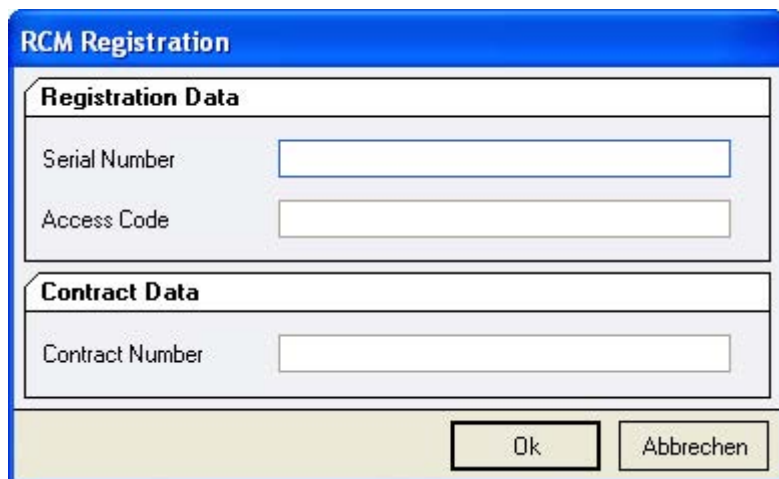
After the welcome screen (please click here on Next), the next windows shows you the destination folder. Preferable this is "C:\program files\RCM Voice" or "C:\RC-Timing\RCM Voice". You should never use the folder "program files" when using Windows Vista, Windows 7 or higher. Install the program in a different folder like C:\RC-Timing\RCM Voice". Due to the handling of the user rights in these versions of Windows The program will not work correctly if it is installed in C:\program files".



Again you click on next and in the following window you can determine whether setup creates an icon on the desktop for starting RCM Voice. The next window shows you a summary of the actions setup will execute. With clicking on Install you will start the setup.

2.1 Registration

To activate the program you need the contract number, the serial code and the access code. You have received these information with your order from RCM. Launching the application the first time you have to type in these information before you can use the program.



The image shows a dialog box titled "RCM Registration". It contains two sections: "Registration Data" and "Contract Data". The "Registration Data" section has two input fields: "Serial Number" and "Access Code". The "Contract Data" section has one input field: "Contract Number". At the bottom right, there are two buttons: "Ok" and "Abbrechen".

The application language is set to English by default. For changing this language please see Settings/Language later in the manual.

3 First steps.

3.1 Configuration of the network

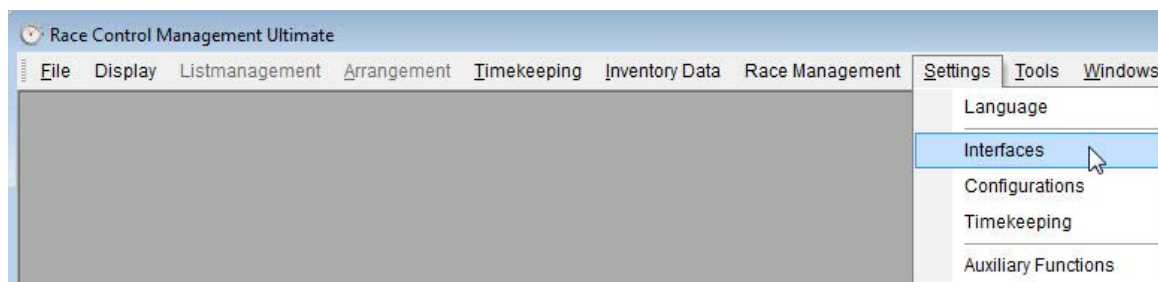
The timekeeping software of RC-Timing (RCM Ultimate, RCM Professional, RCM Advanced, RCM Beginners and RCM Kart) is equipped with a Service-Discovery-Manager, which enables an automatic connection to the clients like RCM Publisher, RCM Voice and all the others.

But first of all, the interface in the timekeeping software has to be enabled. Please run RCM Ultimate (or another application RCM Voice is cooperating) and go to Settings/Interfaces. The checkbox "Voice Interface activated" must be activated. If not, please do it and confirm this change with Save. Depending on the number of Voice programs you have installed in your network, the number of connections must be set high enough.

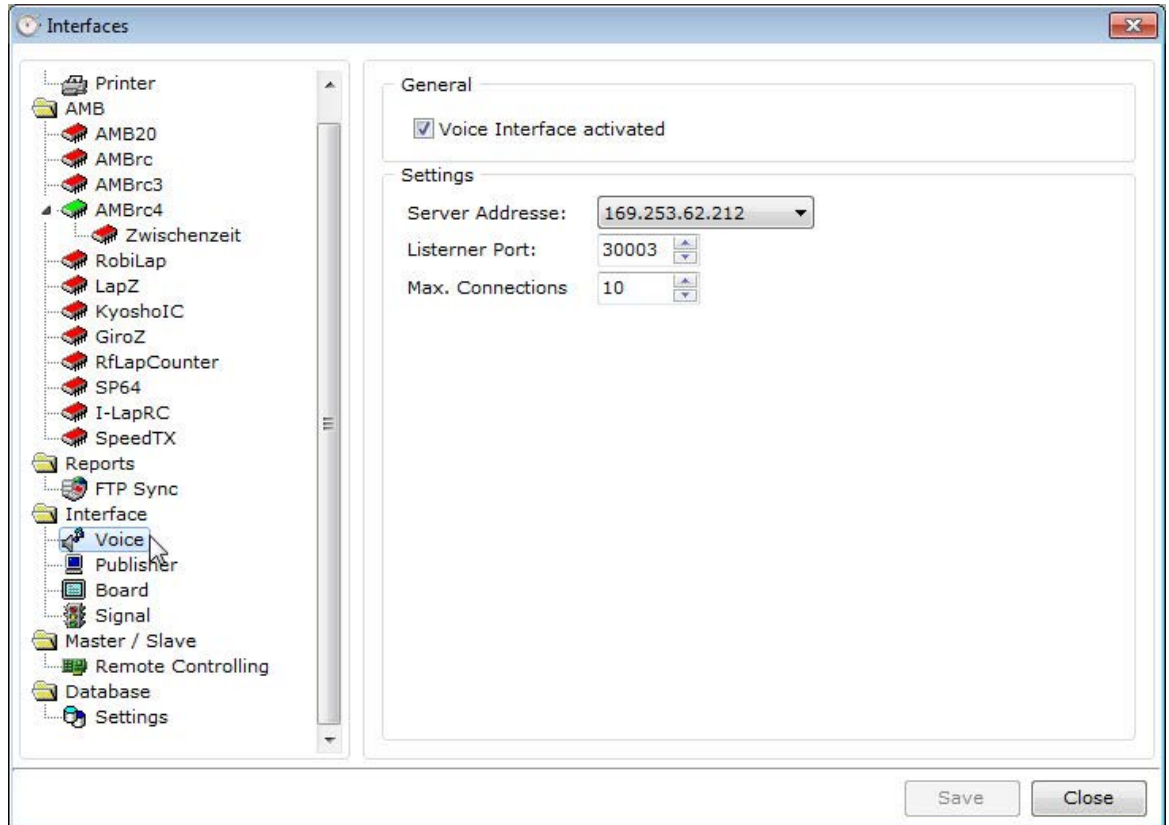
Now you start RCM Voice and the program find the connection automatically, shown by the hint in the footline „Connected to RCM Voice Interface“.

If this is not the case and in the footline "Connection Timeout!!!" is written, RCM Voice is not connected to RCM Ultimate. In addition the bar just below the displayed clocks is colored red. You have to set the IP-address of the server manually.

Please run again RCM Ultimate (or another application RCM Voice is cooperating) and go to Settings/Interfaces.

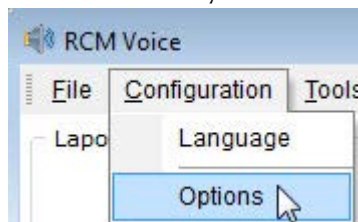


In the left column of the window you mark Voice.

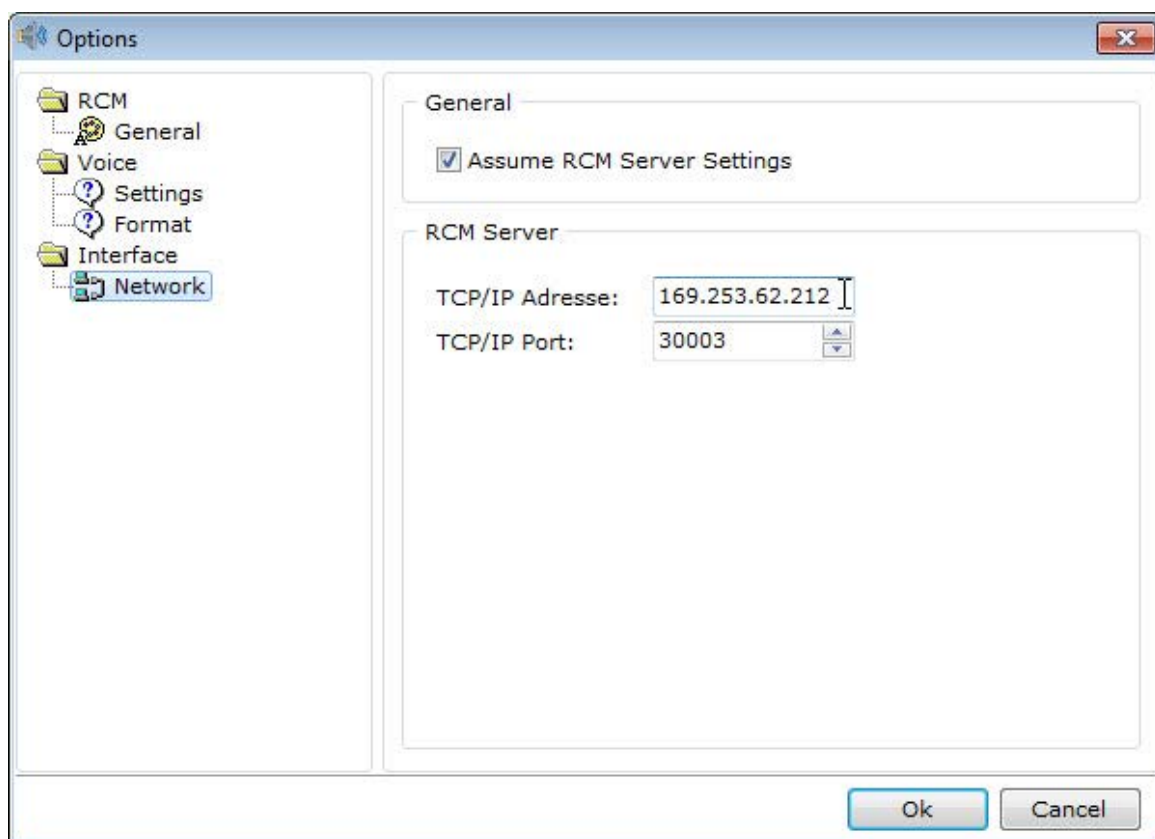


In the right column you now see the Server-IP-Address which must be set in RCM Voice.

In RCM Voice you choose Configuration/Options.



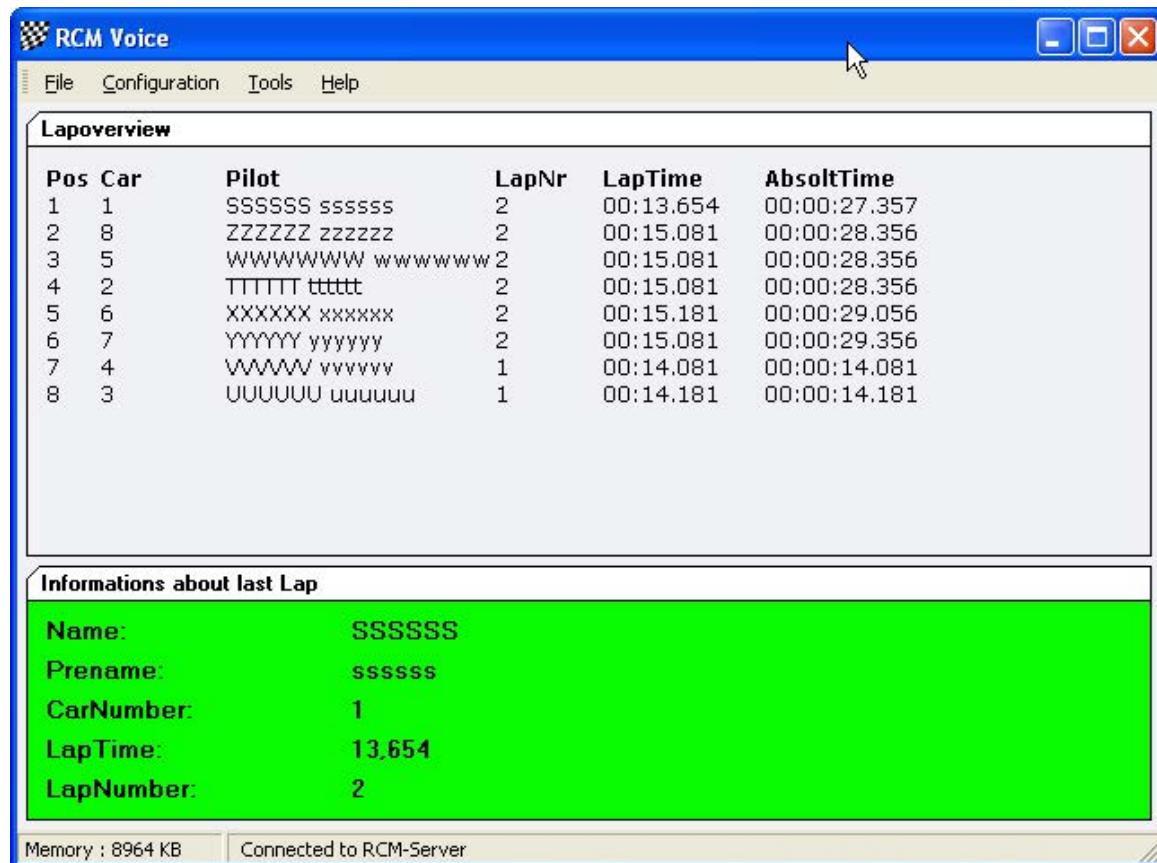
In this windows you mark on the left column Network and type the IP-Address you have found in RCM Ultimate into the field TCP/IP-Address.



Please leave the number of the TCP/IP Port at 30003. Only with this port RCM Voice is able to receive the necessary information from RCM Ultimate. Confirm your settings by clicking Ok. Now the footer line changes to "Connected to RCM-Ultimate" and the color of the bar will change to white. Please consider, that it can take several seconds until RCM Voice has found the connection to RCM Ultimate. In the footer line of RCM Ultimate you will find the information "Voices: 1". If RCM Voice can not establish a connection your network may be does not work properly. To check this, please open a Command Shell and type in PING <ip-adresse> (for example PING 255.255.255.158). If you got an error message (time limit exceeded), your network is not working properly and you have first to check the connections.

4 The Window of RCM Voice

The window of RCM Voice is divided in two frames, in which you can see important information of the race. The top frame shows you all drivers running in the actual race/heat in the sequence of the actual order of the race. In the lower frame you see details to the last lap counted by the system.



5 Configuration of RCM Voice

5.1 Languages

With Configuration/Language you can set the languages used by RCM Voice.

Language +/- allows you to create a new language (please see Language Editor), delete a language and to export a language file.

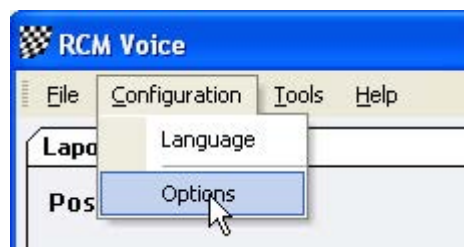
Marking RCM Language in the left column of the window you can set the language used for the application. This means the language for all the text in the menus and windows of RCM Voice.

If you mark Voice Language in the left column, you can determine the Language used for all announcements of RCM Voice via the sound system. Additional languages are eventually available as an update.



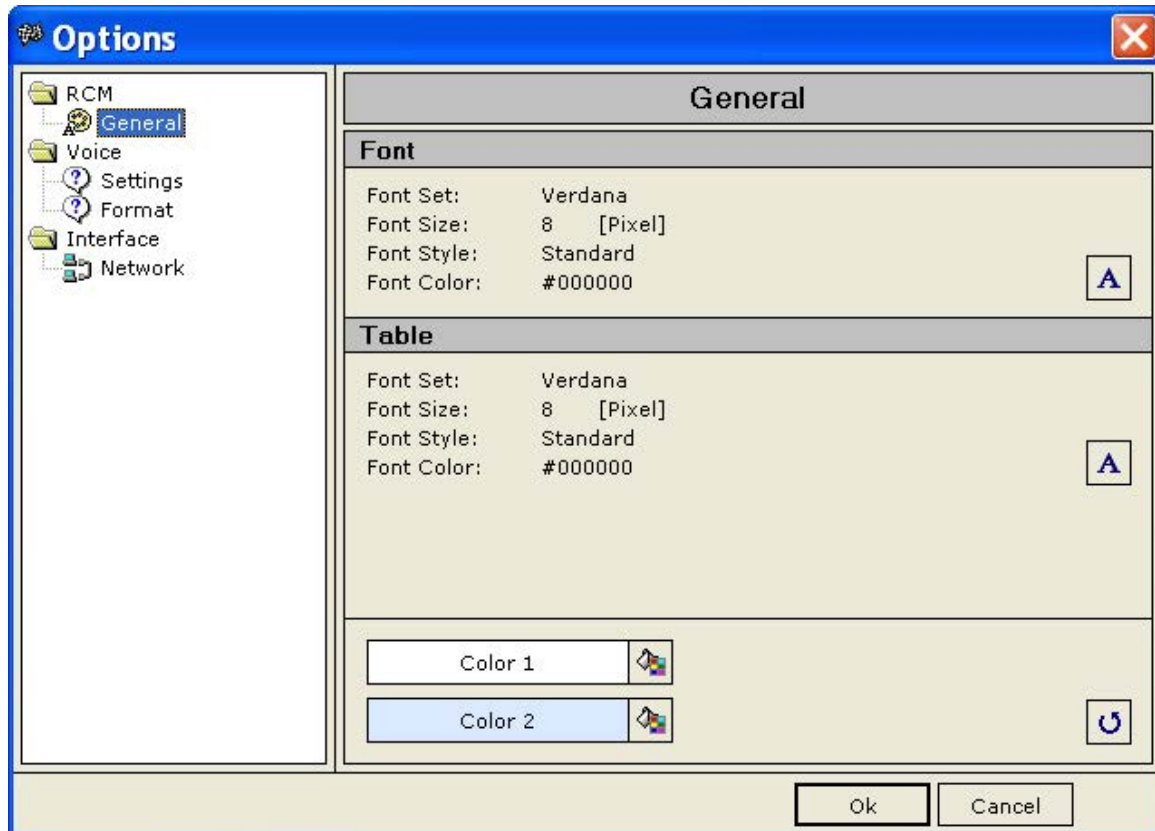
5.2 Options

The options allow you to change the settings for RCM Voice. You access it through Configuration/Options.



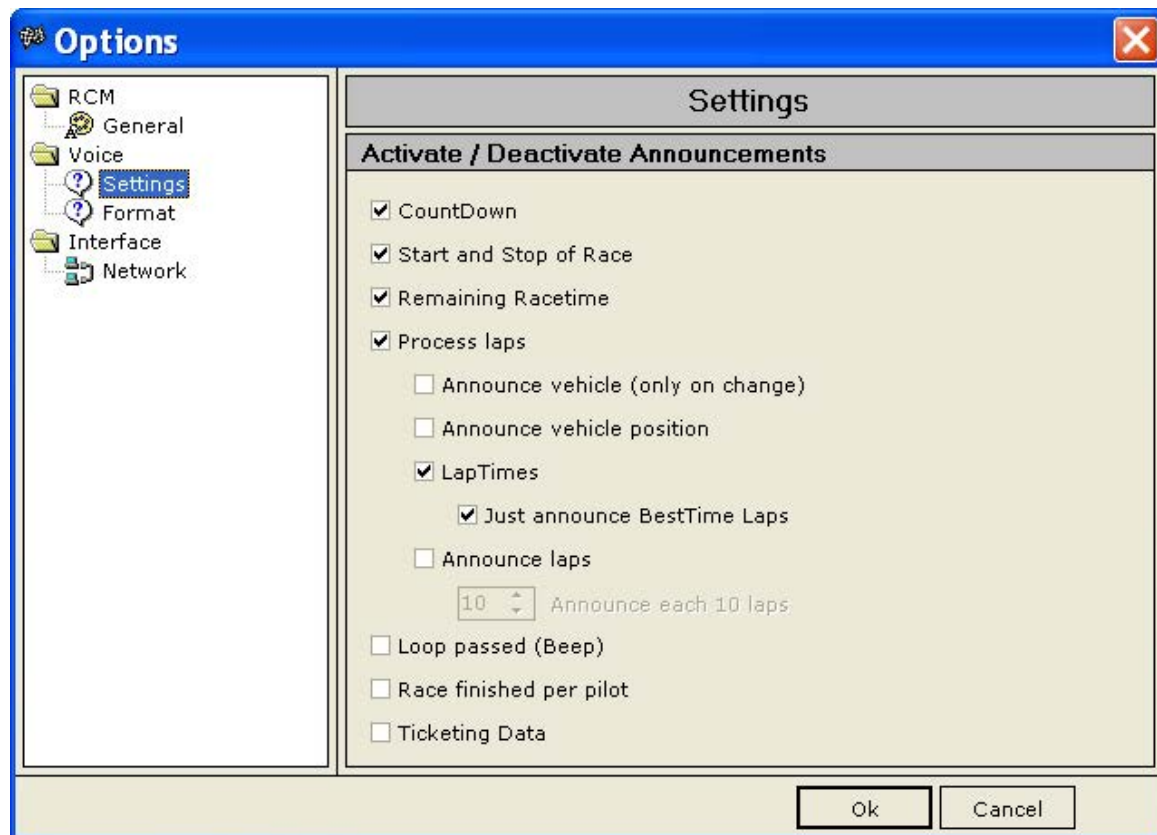
5.2.1 General

Marking in the left column General, you can set up the fonts, the fonts size and some colours used by RCM Voice. You can set the Fonts for tables independent from the other text. The colours shown on the bottom of the column are used to make tables better readable. If you want to change these colours, please use light and different colours.



5.2.2 Settings

Here you can define, which announcements RCM Voice is executing. It depends on the timekeeping application you are using which announcements are possible.



For example, the Ticketing-Data is only working with RCM Online. The following survey gives you an overview:

	Server	Kart	Advanced	Beginners	Online	Online Easy
Countdown	Yes	Yes	Yes	Yes	No	No
Start/Stop	Yes	Yes	Yes	Yes	No	No
Racetime	Yes	Yes	Yes	Yes	No	No
Laptimes	Yes	Yes	Yes	Yes	Yes	Yes
Loop passed	Yes	Yes	Yes	Yes	Yes	Yes
Ticketing	No	No	No	No	Yes	No

In Detail:

Countdown: The remaining time until the start of a race is announced in specific time intervals.

Start/Stop: You hear a sound at the start and the end of a race.

Remaining Racetime: The time of a race is announced in specific time intervals.

Process laps: Has to be activated to announce laptimes

Announce vehicle: The carnumber will be announced

Announce vehicle position: The position of the car is announced.

Laptimes: The last lap of each driver is announced. Please note that this may be takes much time and can result in unaudible announcements especially on short tracks and a large number of drivers racing. You should mark the checkbox Just announce Besttime Lap.

Announce laps: The number of laps for each driver is announced. You can specify after how much laps this is done again and again.

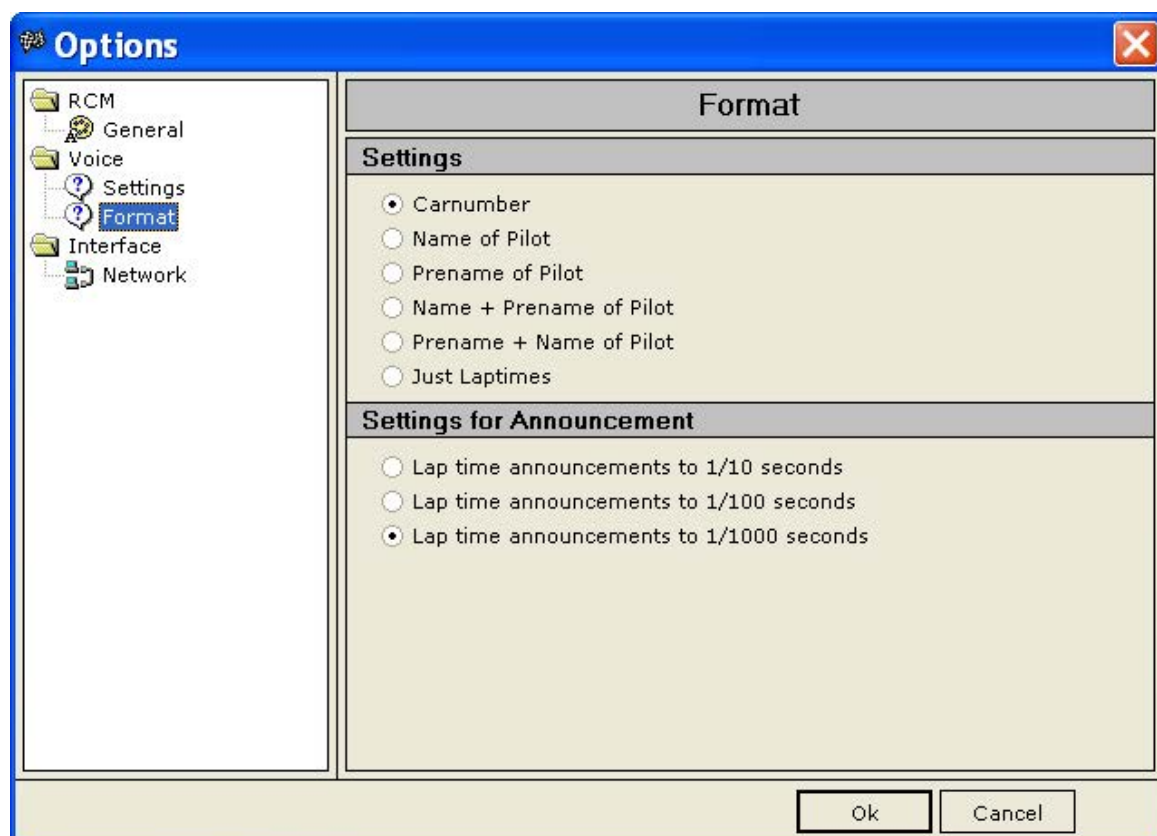
Loop passed: A Beep is always announced when a transponder passes the loop.

Race finished per pilot: It will be announced, if a driver has finished the race.

Ticketing Date: This item is only working together with RCM Online. For details please refer to the manual of RCM Online.

5.2.3 Announcementformat

In this window you can determine the base settings of the format for the announcements. In the upper part of the right column you can define, how the Car in an announcement is identified: by carnumber, name of the driver or only the laptimes. In the lower part you have the choice of announce the laptimes to 1/10, 1/100 or 1/1000 seconds. After you have confirmed your new settings with Ok, you can check the format with Tools/Soundtest.



Please note that depending on your choices the announcements may be take much time and will be unaudible especially on short tracks with a large number of drivers racing. We recommend to identify the driver only by his carnumber and to use laptimes in 1/100 second format on short tracks.

5.2.4 Network

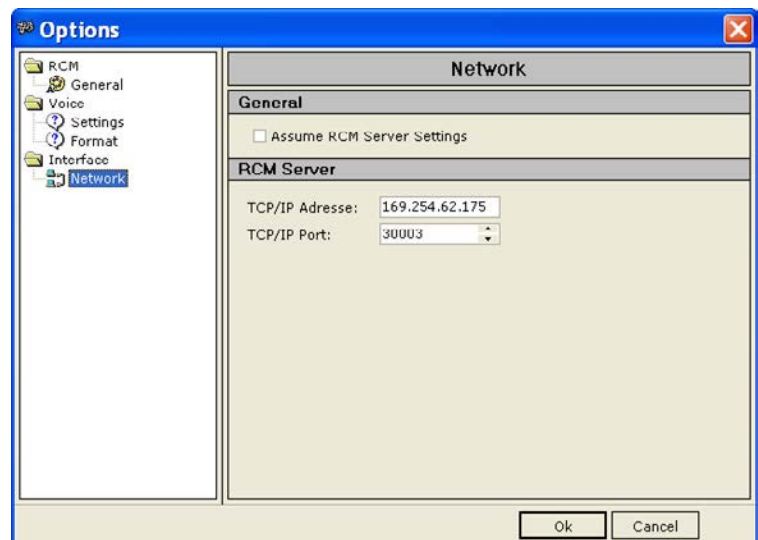
In Network you have to configure the IP-Address of the computer where the timekeeping-software is running. RCM Voice needs a network connection to this computer.

The timekeeping software can be one of the following applications:

- RCM Server
- RCM Kart
- RCM Advanced
- RCM Beginner
- RCM Online
- RCM Online Easy

Remark: Make sure that the checkbox "Voice Interface activated" in the timekeeping software is activated.

The TCP/IP Post is set to the correct number by default. You should not change this number.



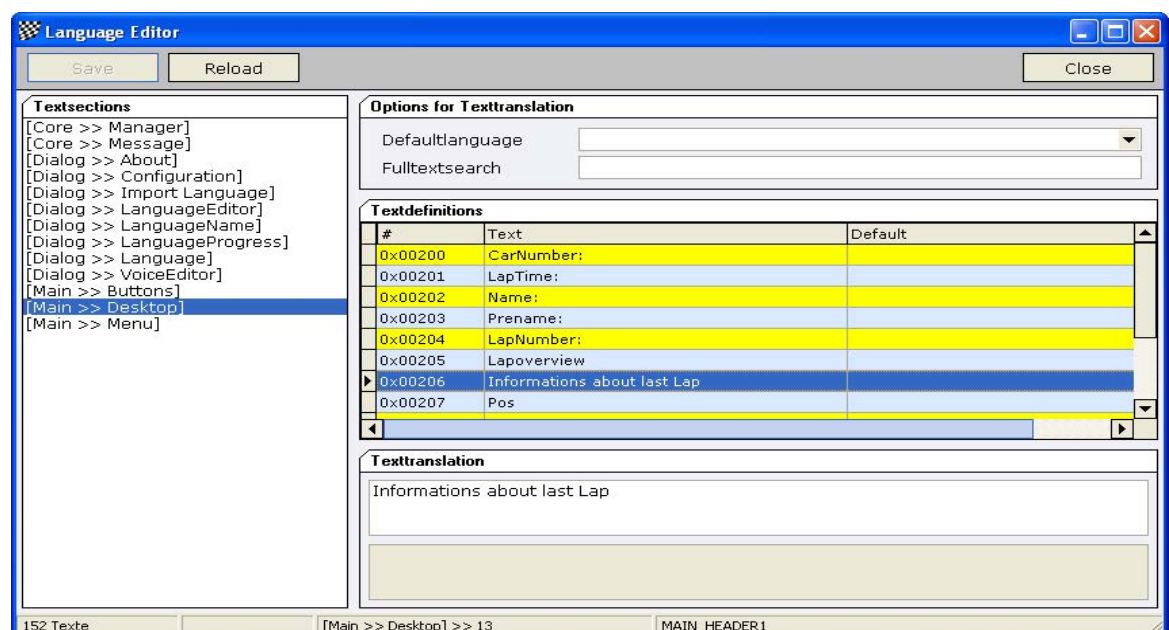
6 Tools

6.1 Language editor

The Language editor allows to you to change all the text used by RCM Voice.

Furthermore it is possible to generate new language sets and to translate all the text into a desired language.

The windows of the language editor shows you in the left column a menu ordered to topics which are based on the use of windows and/or functions. If one of these topics are marked, you see in the right column a table of all the text definitions related to this topic. On top of the right column you can define a default language. This will be active, when you mark another topic on the left side.



6.1.1 Change a text

After having selected a topic in the left column you have to mark the text in the right column. You can change the text below in the field Texttranslation. Please note, that the changes will only be effective, when you finish by clicking the Save-button.

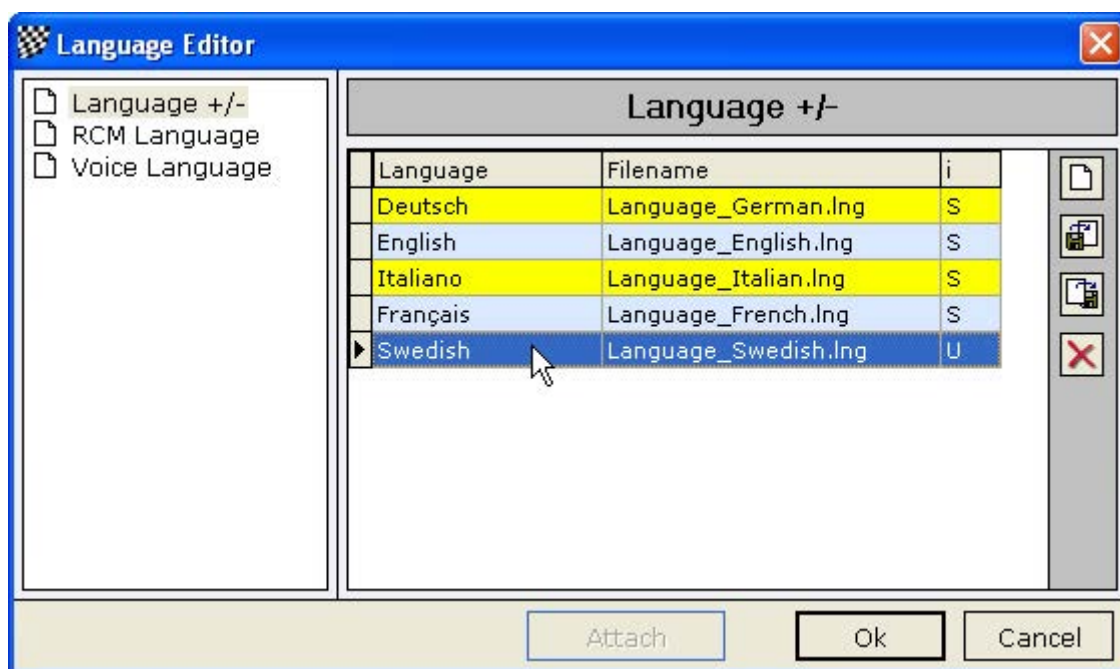
With Fulltextsearch you can search the whole language database for a specific text. This will help you to correct for example a word with a type mistake you have found. Please note again, that you have to save your work before you mark another topic in the left column or before you close this window.

6.1.2 Create a new language set

The language editor can be used to create a new language set. The name of the new language must be created in the menu Configuration/Language.



Here you select Language +/- . In the right column you see all languages available with further information, which you find in the table in the last column (under heading "I"): "S" means Standard and "U" means User. The standard languages have been delivered with the software. We are not able to deliver all User based languages. This depends on contracts with the creator of these language sets. Some of the Language Sets we have bought, other will be offered by the creators. If you have created a new language set, please contact us.



The buttons on the left side of the windows allows you to generate a new language set, to import a language set, to export a language set and to delete a language set. New language set: Opens a window in which you have to type in the new name

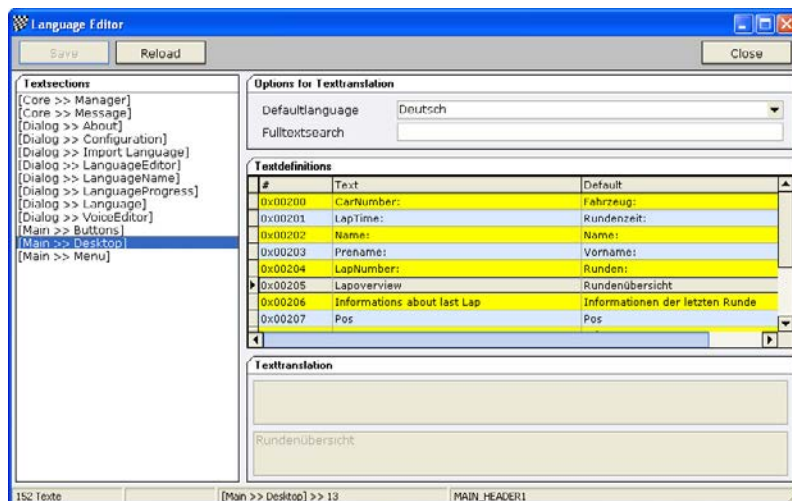
of the Language you want to create. You have only to type in the name in the Language field. The filename will be automatically created and should not be changed. For the name of the language please use the English description. When you confirm your input with Ok, a new set based on the English set will be created. Now you can translate all text with the language editor.

Import language file: You can import language files for RCM Voice from other creators. If this new language is not yet available in the application, you have first to create a new language. Otherwise this option synchronise the new data with the existing language file. Missing text will be replaced by the English text. When you import a language file a logfile will be created showing you a detailed description of all operations done by the system.

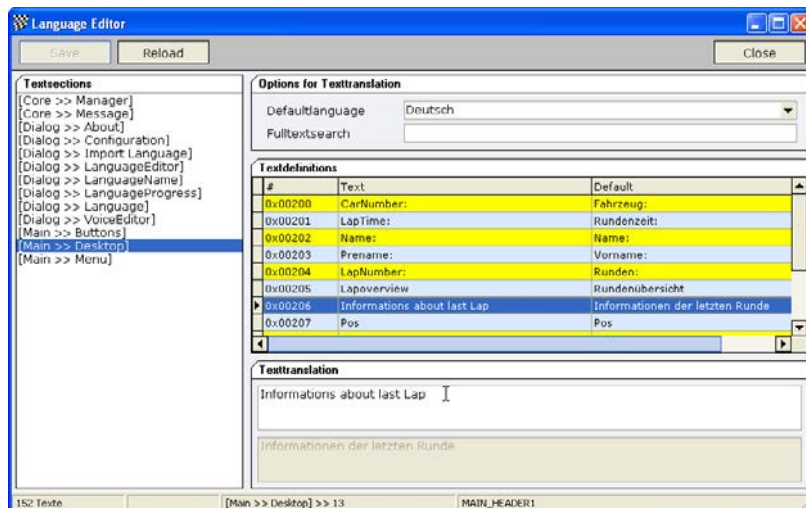
Export a language file: With this function you can export a marked language to a language file.

Delete a language: With this button only the entry in the tables of the application is removed. The language file by itself will not be deleted.

If you want to create a new language set, you have to create a new language. After that, you have to make sure, that RCM Voice uses this language (Configuration/ Language/RCM Language). Cause the new set is based on the English Set, all text is now in English. The next step is to translate all text with the language editor. For a better understanding of all text we recommend, that you use the default-setting of the language editor to have the text also displayed in that language you are familiar.



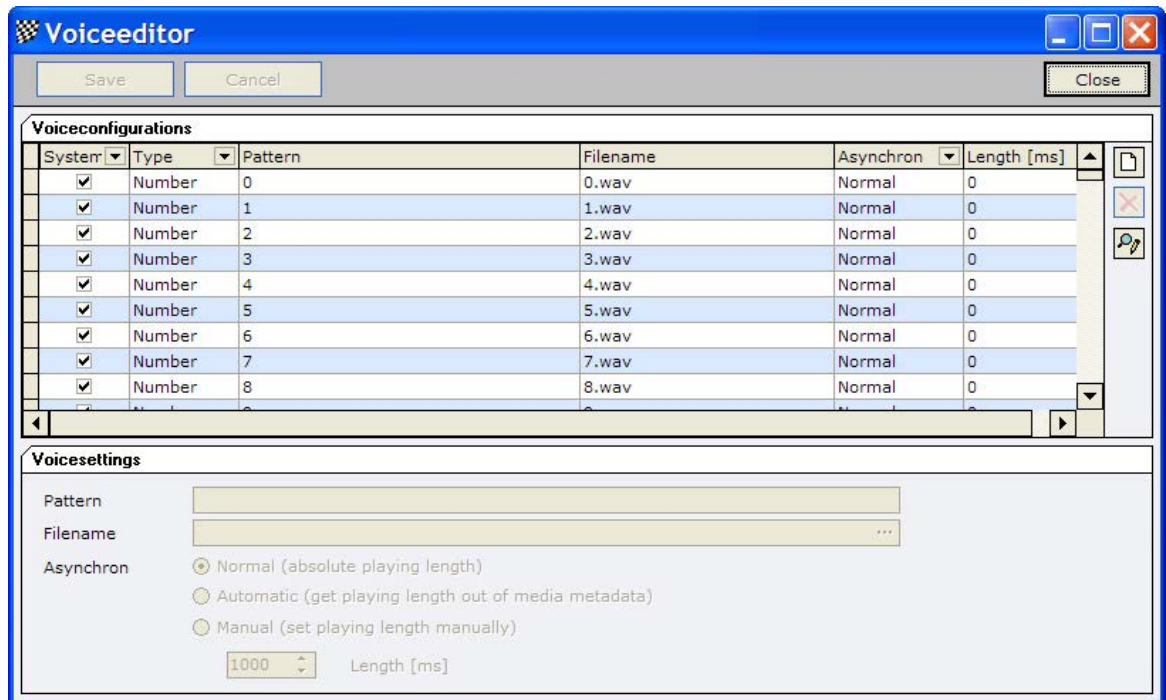
Please note again, that you have to save (with the Save button) all your changes before you select another topic in the left column of the language editor.



6.2 Voice editor

With the voice editor you can define the different soundfiles used for the announcements. For you as a user there is only one function of interest: Very often sound files play longer as needed for the voice response. With the setting of the playback mode you can limit the play time. When using the manual mode, you can set the time in ms. Please note: if you limit the play time too much it is possible that you hear nothing.

The buttons on the right side of the windows are used to add soundfiles to the configuration or to delete one.



6.3 Soundtest

With this function the following default text is announced:
Meier Peter 15,759.

According to the definitions you have set in Configuration/Options/Announcementformat this text can vary.

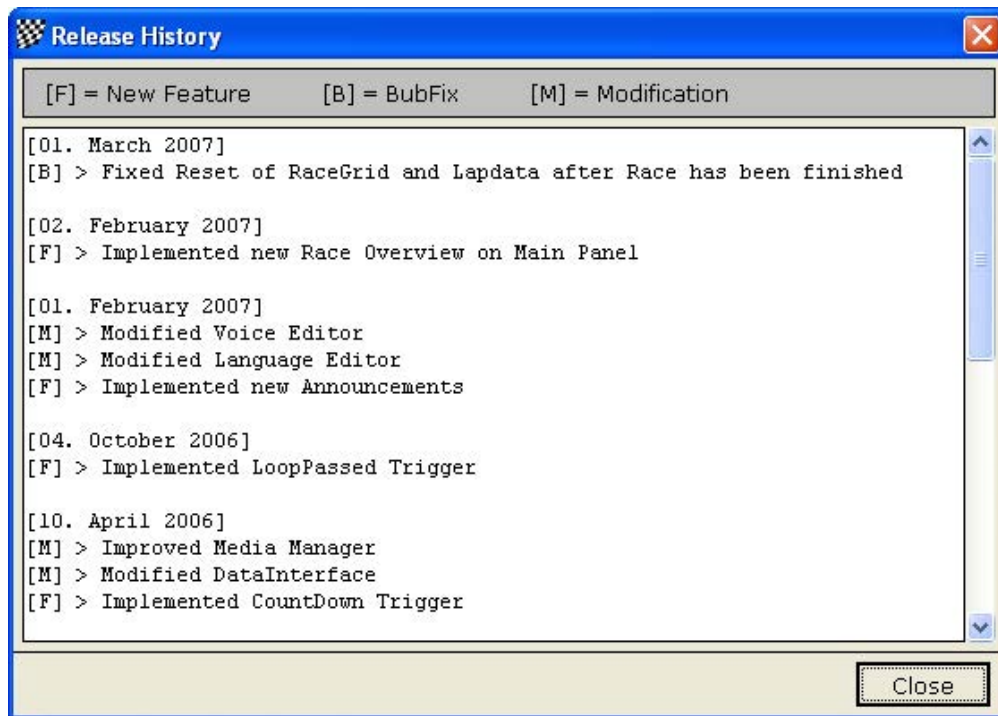


7 Help

7.1 Release history

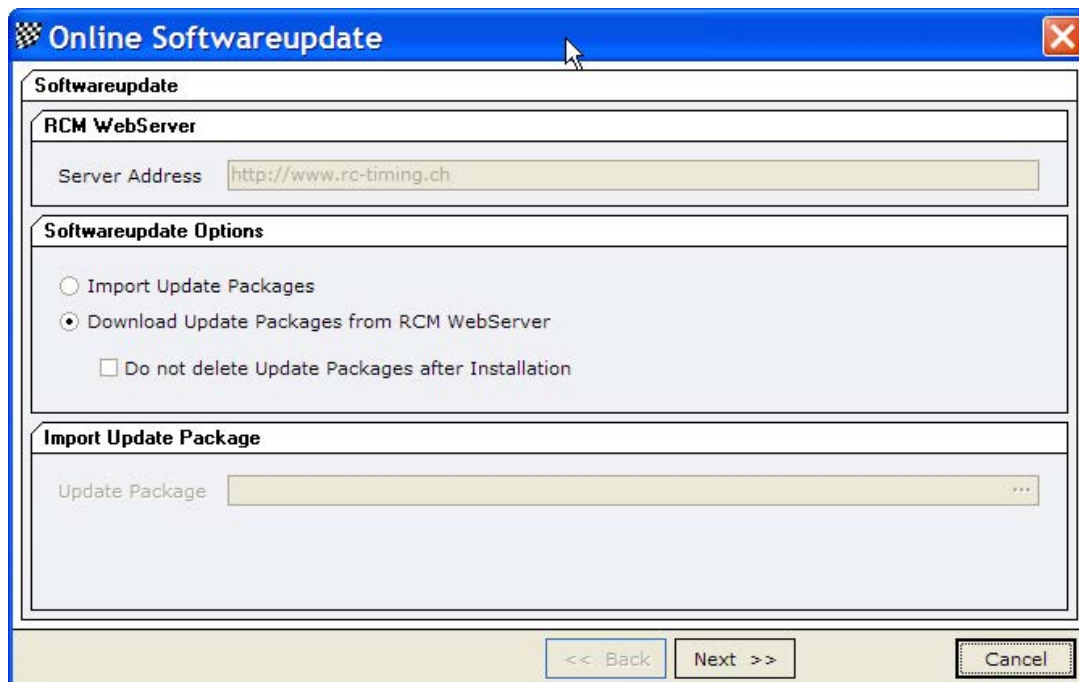
The release history is a text file with comments to all changes/devolepements have been made for this application. The single entries are marked with letters: [M] = modification, [B] = bug fixing and [F]= new function.

When you get a new version we recommend that you read the release history to be informed on the news of RCM Voice.



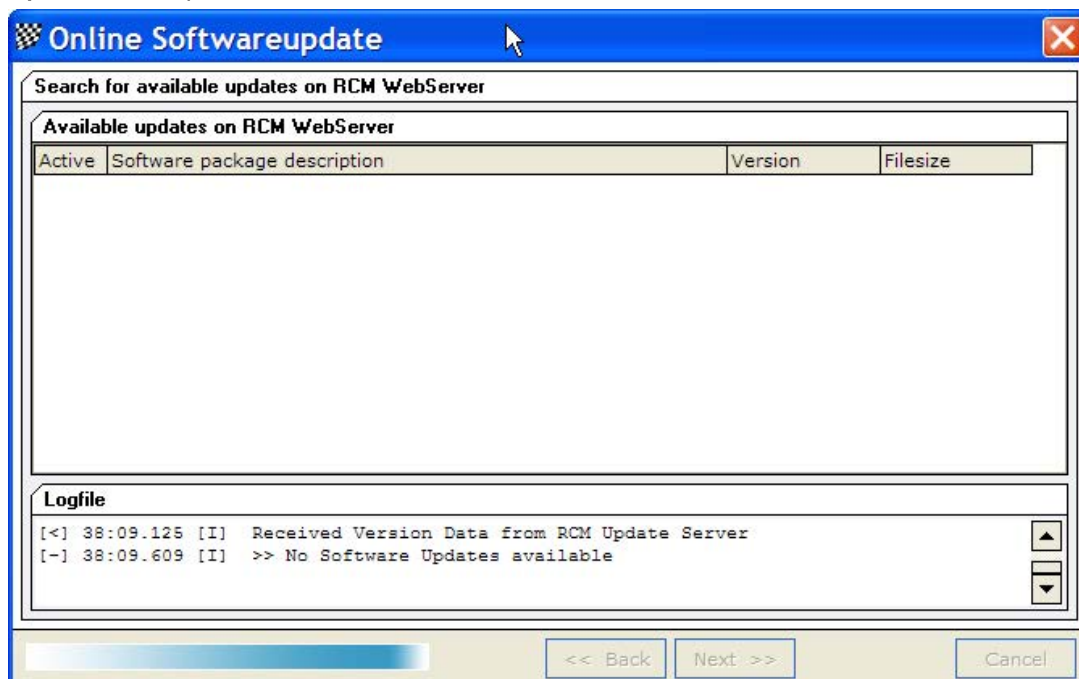
7.2 Software Update

If your computer is connected with the internet, you can easy search for new releases of RCM Ultimate.



You can enter the server-address and you can select whether the update file should be deleted after the installation or not. If you have activated "Do not delete Update Package after Installation" the Update Package will be saved in the folder RCM Ultimate\Update\Packages\Date. Transfer this folder to another computer RDCM Server is installed on. Now you can install this Update Package by activating "Import Update Packages" and you have to choose the package below on Import Update Package.

Clicking on next the updates will be searched. You will be informed on possible updates and you can select which to install.



7.3 Info

Here you find the release version of RCM Voice.



8 Concluding remarks

We hope you enjoy RCM Voice. If you have any questions or any problems please contact us. Simply write an email to support@rc-timing.ch. Please do not forget to include the program name and the version number you are using. This will help us to answer your questions without any delay. If you are not known to us as a contact person of one of our customers, we should also know the contract number.

RC-Timing
Felix Romer
Talackerstrasse 45
CH-8156 Oberhasli